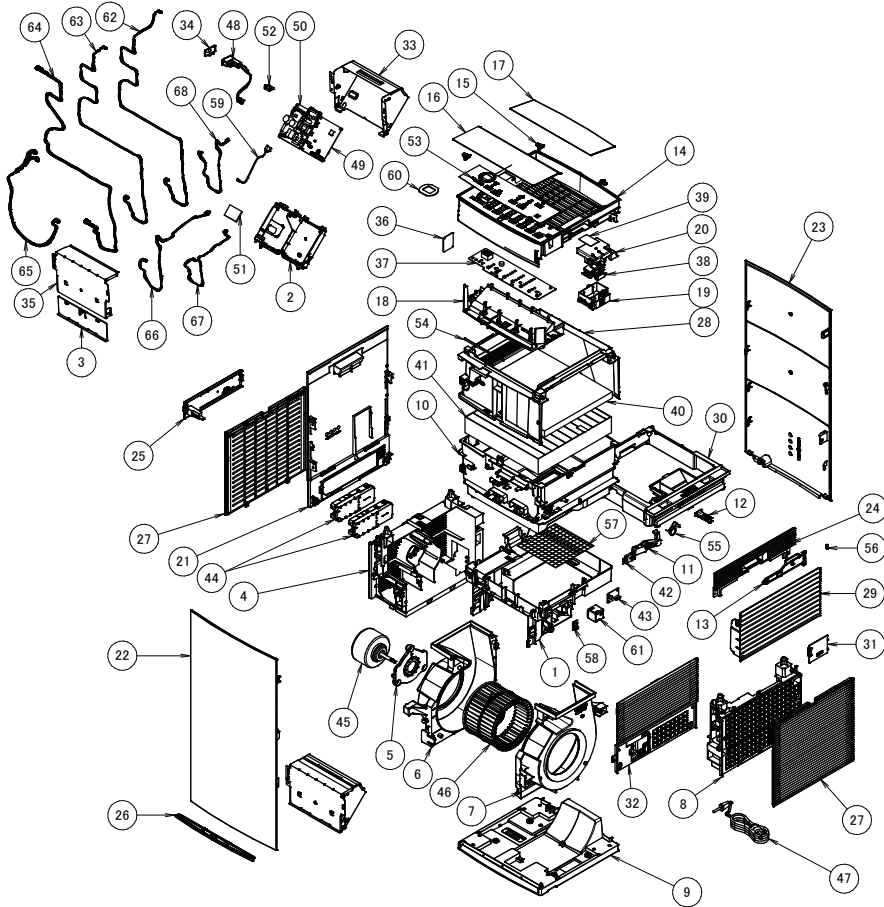


MC80ZVM



No	Description	No	Description
1	Casing frame (el. compo.) (1/2)	35	El. compo. box cover
2	El. compo mounting plate	36	WiFi module
3	Protection plate (el. compo.)	37	Operation PCB
4	Suction grille (left)	38	Ioniser PCB
5	Motor mounting plate	39	Aluminium tape
6	Fan scroll (left)	40	Deodorising filter
7	Fan scroll (right)	41	Electrostatic HEPA filter
8	Suction grille (right)	42	Switch filter
9	Bottom panel (resin)	43	Odour sensor
10	Casing frame (air filter) (1/2)	44	Streamer
11	Lever (filter detector)	45	DC fan motor
12	Switch (resin case)	46	Sirocco fan rotor
13	Switch (cover)	47	Power cable
14	Operation sign cover	48	Safety switch
15	Shaft hori. blade	49	Control PCB
16	Disch. grille hor. blade (front)	50	Power PCB
17	Disch. grille hor. blade (back)	51	Insulation sheet
18	Partition panel (resin)	52	Wire clip
19	Resin case ioniser	53	Indication label
20	Cover	54	Sealing material partition
21	Left side panel (resin)	55	Wire spring (case detector)
22	Front panel (resin)	56	Coil spring
23	Rear panel (resin)	57	Air outlet protection net
24	Right side panel (resin) upper	58	Humidity sensor
25	Cover (streamer)	59	Ground wire harness
26	Air filter (front)	60	Daikin eye
27	Air filter	61	Dust sensor
28	Casing frame (filter outlet)	62	Wire harness (for ION)
29	Cover (filter outlet)	63	Wire harness (control/WIFI)
30	Resin case (specialized filter)	64	Wire harness (for display)
31	Cover (dust sensor)	65	Wire harness (for streamer+UVC)
32	Right side panel (resin)	66	Wire harness (for sensor)
33	El. compo. box bottom	67	Wire harness (for dust sensor)
34	El. compo. box (left)	68	Wire harness